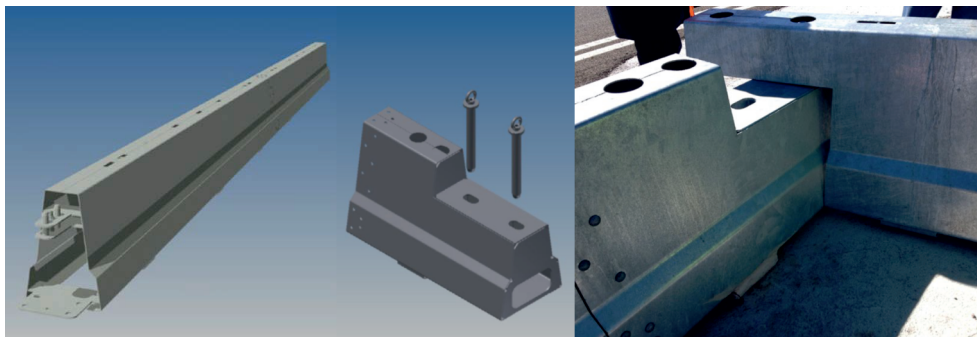




BarrierGuard 800®

Swift, Safe and Simple

SPIE Nederland B.V. provides innovative traffic management solutions. Safety on our roads is priority number 1 and for that we have developed our BarrierGuard 800® steel barriers, next to the VEVA® movable barrier and our CAD0® emergency barrier. All systems providing added safety for road users and maintenance staff and helping to ensure the consistency of traffic flows in a swift way.



BarrierGuard 800® main applications:

Permanent use - median road barrier

The BarrierGuard 800® was tested N2, H1 and H2 as well as MASH TL-3 and fulfills the international demands. The so-called Step profile allows for a controlled crash behavior with little damage to both the vehicle and the construction itself. The Step geometry is therefore often favored by the various Road Administrations.

Temporary use - safe workzones

Used as a lane divider for traffic, BarrierGuard 800® allows for safe traffic separation. The temporary road barrier protects the workzone for the benefit of both workforce as well as road users.

Emergency Opening Gate

Openings in the central reserve guardrail or road barrier are mainly needed as emergency gates and in case of road works as gates to redirect the traffic to the opposite side.

Opening gates are also indispensable in front of tunnels for emergencies or maintenance purposes. They can even be used as workzone access.

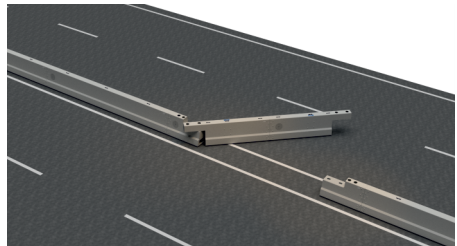
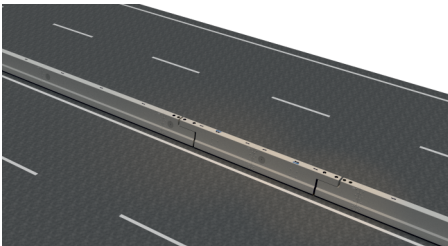


BarrierGuard 800® main benefits:

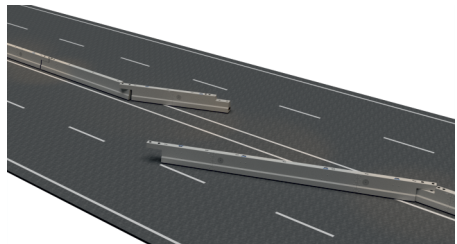
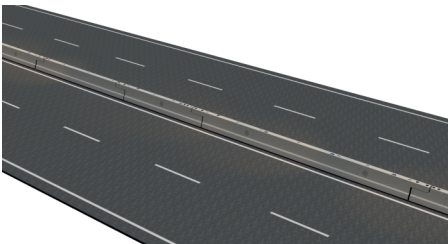
- ▶ Full scale tested and CE certified according EN 1317
- ▶ Up to containment level H2
- ▶ Full scale tested according MASH TL-3
- ▶ Variable lengths in modular design
- ▶ QuickMount connectors *fast and easy installation*
- ▶ Wheel units inside optional
- ▶ Durable and safe hinges
- ▶ Connects smoothly to concrete barriers
- ▶ Standard connection to steel guardrails
- ▶ *No special tools* required
- ▶ Long lifespan *easy maintenance*
- ▶ Internationally accepted
- ▶ Economical solution
- ▶ Durable with low carbon footprint

BarrierGuard 800® Opening Gate options:

Single arm BarrierGuard 800® Opening Gate



Double arm BarrierGuard 800® Opening Gate



BarrierGuard 800[®] technical data:

Plate thickness	4 mm	Opening time (manually)	approx. 1 minute
Material	S235JR according to NEN-EN 10025	Deployment time, total	approx. 5 minutes
Protective finish	internal/external: hot dip galvanised (EN-ISO1461)	Closing time (manually)	approx. 1 minute
EN 1317-5		Maximum Opening angle	67 degrees
BarrierGuard 800[®]	H2 / ASI B / W8	Maximum slope	approx. 8%
BarrierGuard 800[®]		Wheel surface pressure	approx. 1,66 N/cm ²
Opening Gate	H2 / ASI B / W7	Barrier size	800 x 538 x 235 mm
		Barrier length	3 or 6 m modular and 12 m pre-assembled sections
		Passage width	min. 4,6 m up to max. 52,6 m

